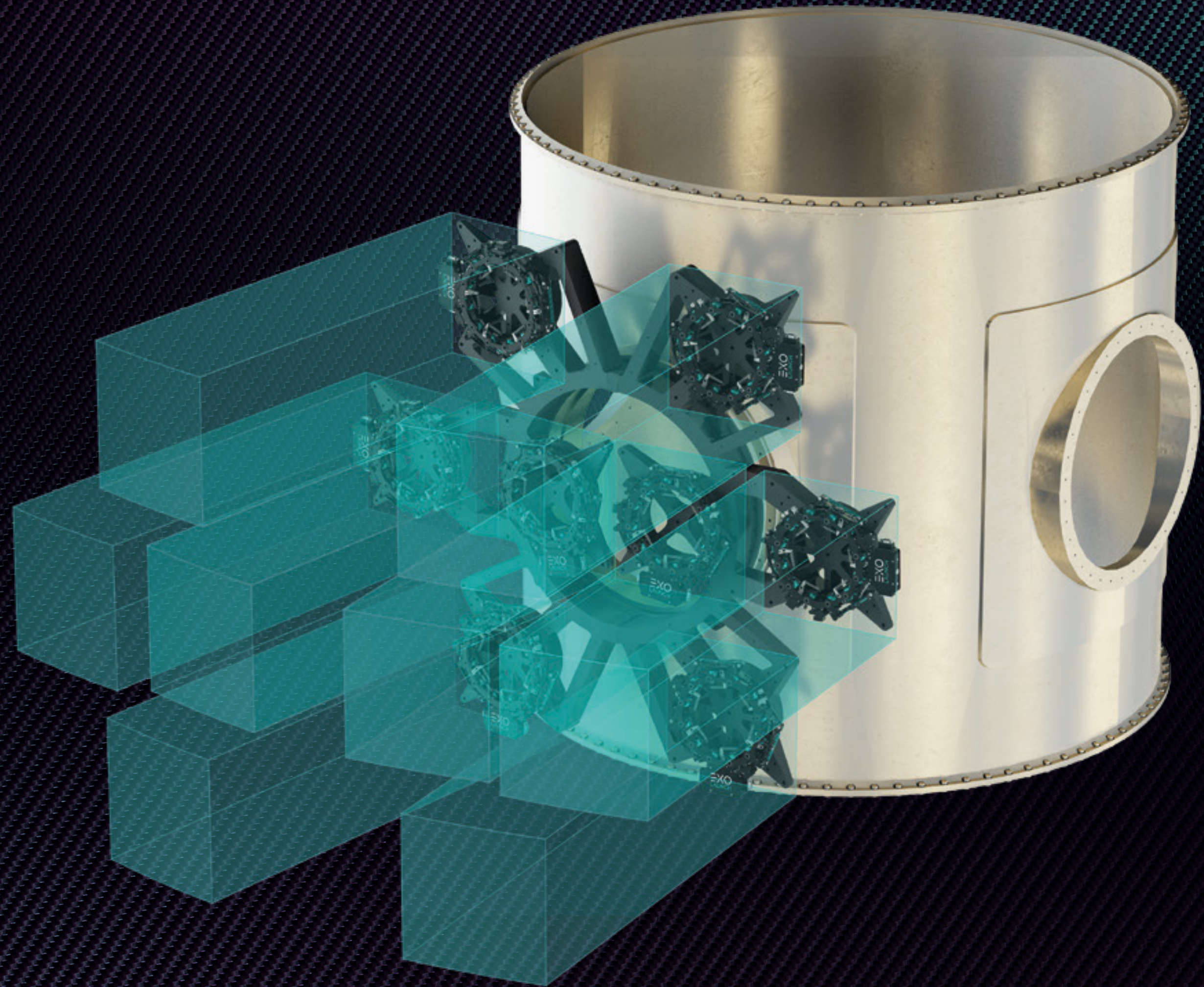


EXOLAUNCH

EXOport



Multi-satellite
adapter

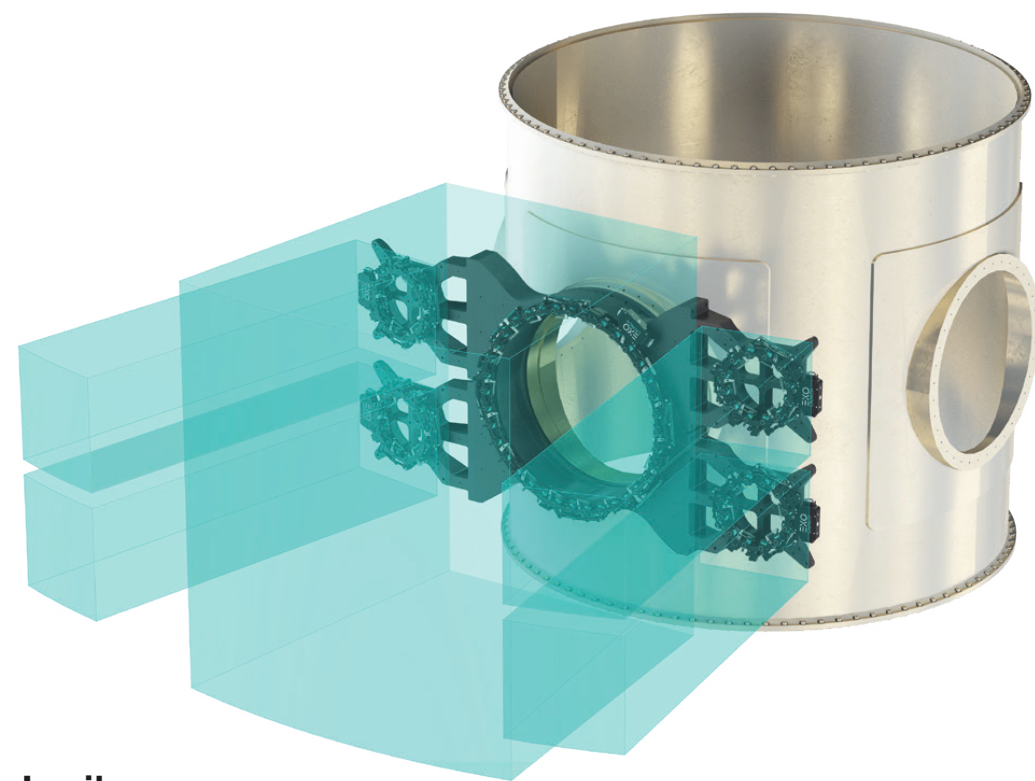
EXOport

(Multi-satellite adapter)

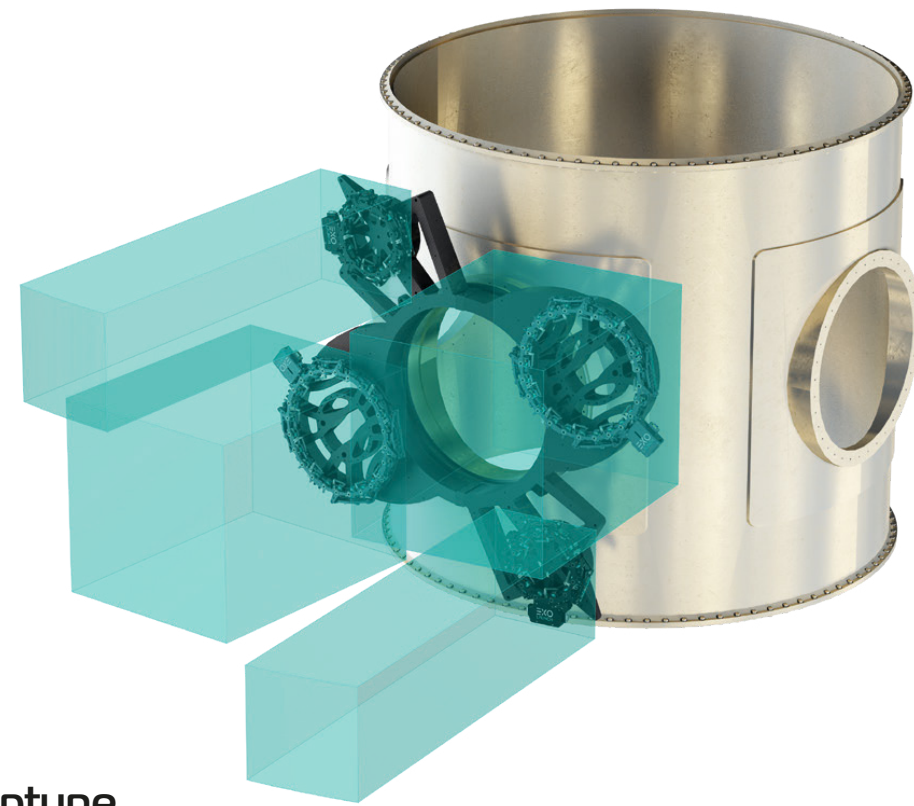
FLIGHT HERITAGE
SINCE 2021

8
missions

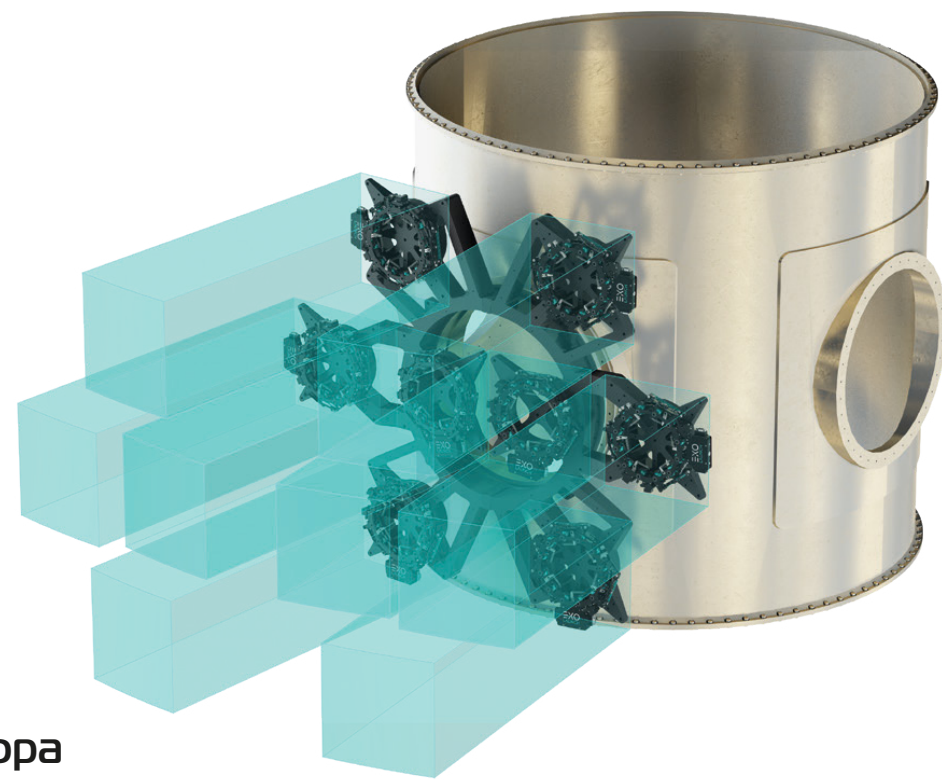
20
EXOports
flown



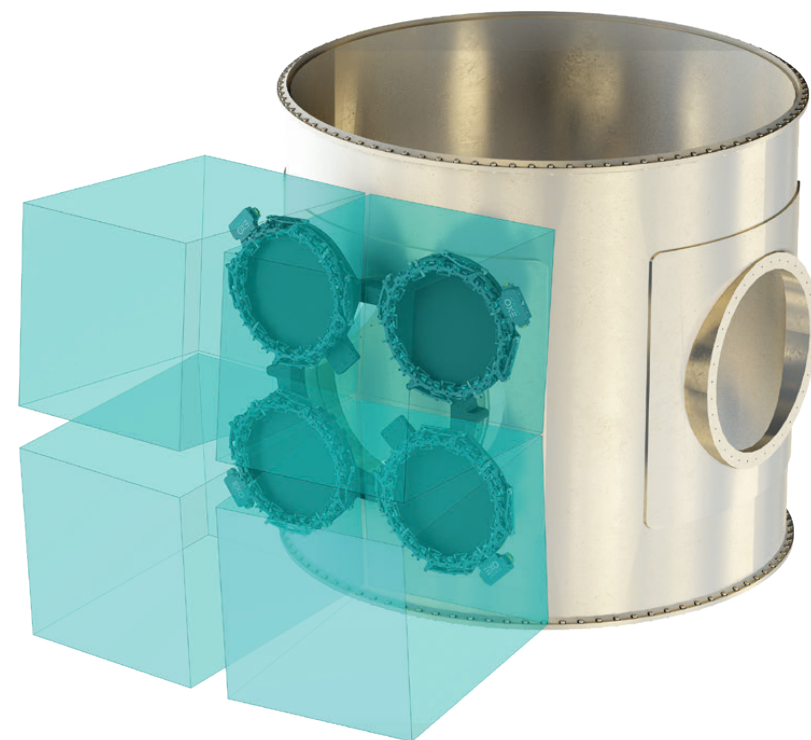
Jupiter



Neptune



Europa



Atlas

EXOport adapters enable an entire smallsat cluster to be mounted on a single 15" or 24" ESPA or Dispenser Ring port. **EXOport** is available in many configurations, allowing clusters to be assembled from a combination of microsats loaded onto **CarboNIX** 8", 11.732", 15", 18.25", 24" separation systems and cubesats loaded into **EXOpod** deployers.

EXOport Fact Sheet

FLIGHT HERITAGE

EXOports have set the industry standard for cluster adapters on 24" ports, realising the full potential of rideshare with a cost effective solution.

COMPATIBILITY

EXOport has a configuration for every Exolaunch separation system, and can be adapted to fit your launch needs. From design to verification, EXOport can be adapted to all launch vehicle requirements.

COST-EFFECTIVE

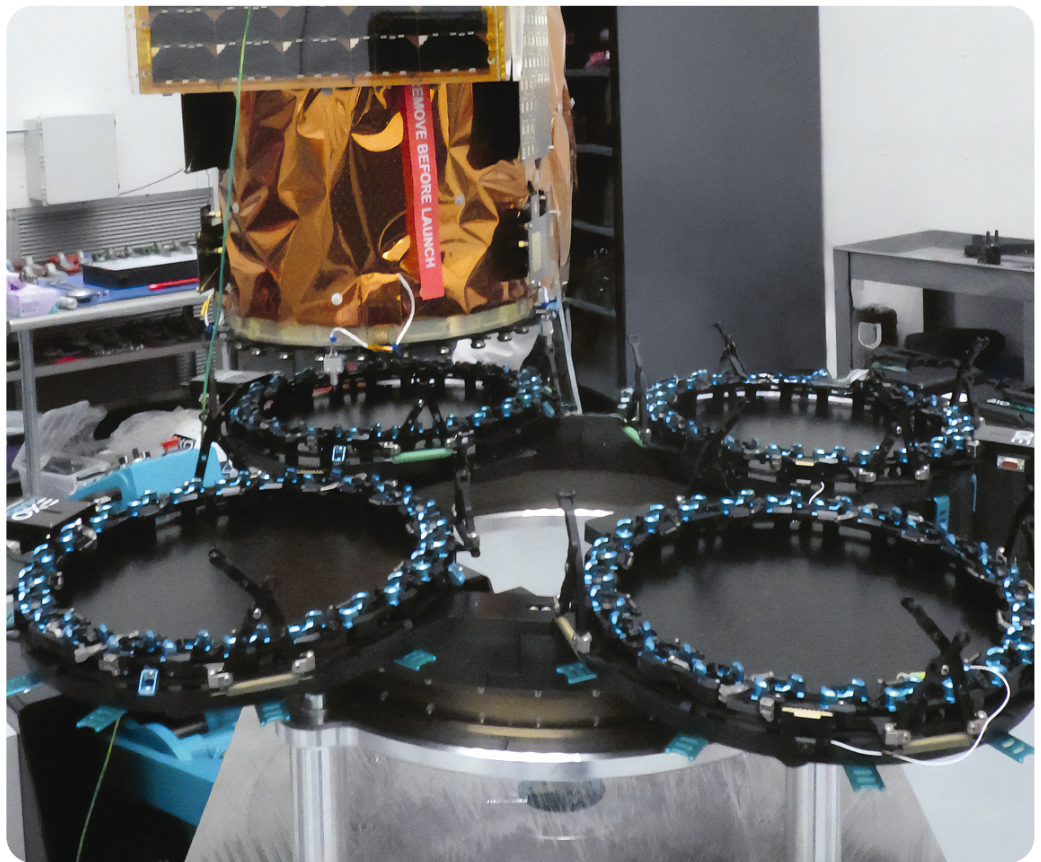
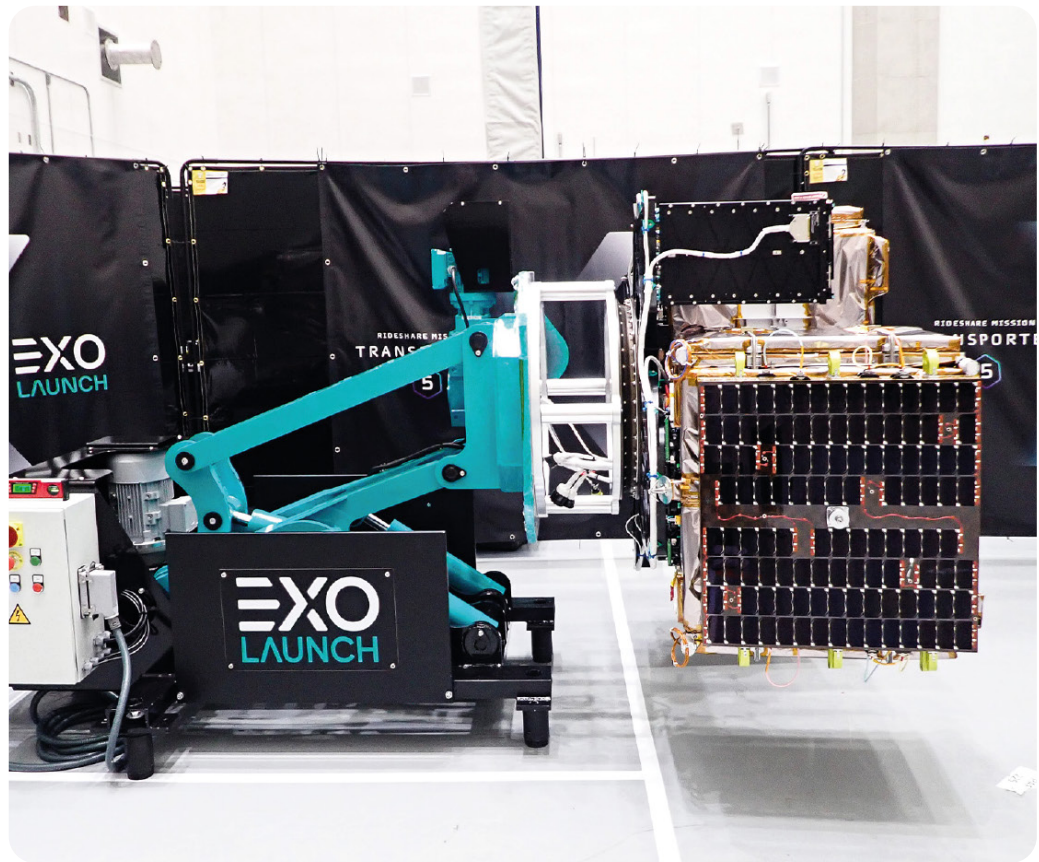
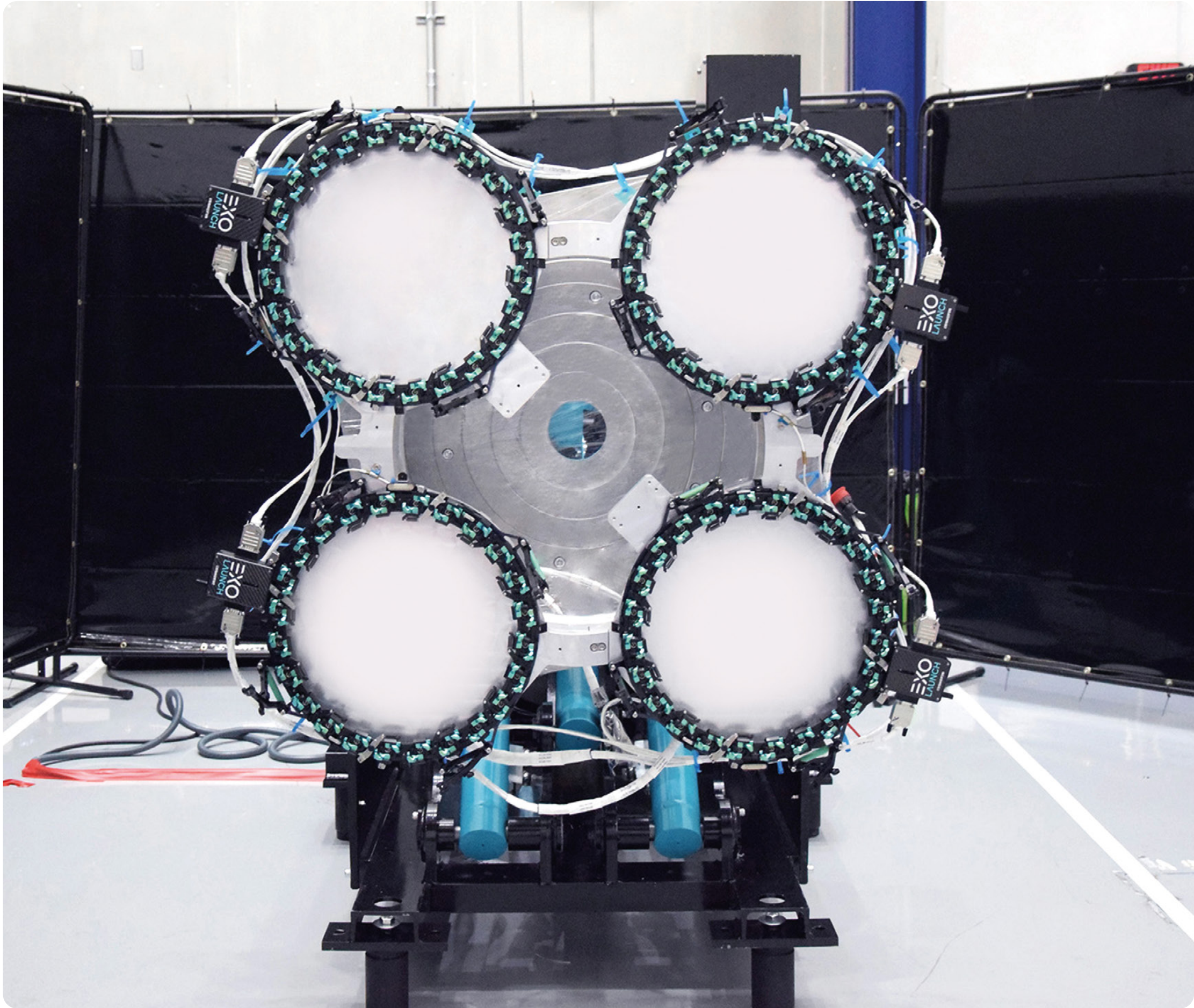
Make the most of every kilo. Whether you are a 0.25U cubesat or a 500 kg microsat, EXOport is the best solution to optimize the mass and volume utilized on your port.

ITAR-FREE

EXOport is not subject to export restrictions of any kind.

MADE IN GERMANY

EXOport in Action



EXOLAUNCH



sales@exolaunch.com